

MACHINES AND SYSTEMS FOR THE STEEL CONSTRUCTION INDUSTRY



S.p.A.

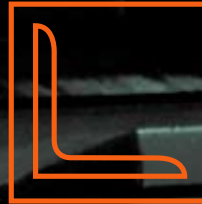


Hydraulic punching and shearing machines

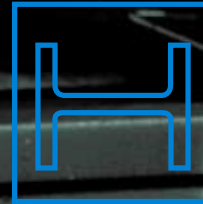
Automatic CNC punching, drilling and thermal cutting systems

Automatic CNC punching and drilling systems

Automatic CNC punching, drilling and shearing systems



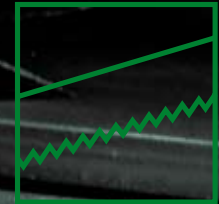
Automatic CNC punching, drilling, notching and shearing systems



Automatic CNC drilling systems

Automatic CNC drilling and sawing or coping systems

Automatic CNC coping systems



Automatic CNC band and disc sawing systems



# HYDRAULIC PUNCHING AND SHEARING MACHINES



401  
+ coordinate table  
Mod. TACO PLC



801

1105 N



| MODEL |    | 304        | 404NP   | 604        | 604NP      | 805N       | 1105N      | 401   | 801   | 1001K |
|-------|----|------------|---------|------------|------------|------------|------------|-------|-------|-------|
|       | kN | 300        | 400     | 600        | 600        | 800        | 1000       | 400   | 800   | 1000  |
|       |    | mm 32x8    | 32x10   | 32x16      | 32x16      | 32x20      | 32x26      | 32x10 | 32x20 | 32x26 |
|       |    | mm 70x70x7 | 80x80x8 | 100x100x10 | 100x100x10 | 130x130x14 | 150x150x16 | -     | -     | -     |
|       |    | mm 30/30   | 38/35   | 45/42      | 45/42      | 45/45      | 50/50      | -     | -     | -     |
|       |    | mm 325x10  | 350x12  | 400x16     | 350x16     | 450x15     | 510x16     | -     | -     | -     |
|       |    | mm 8       | 10      | 10         | 10         | 13         | 13         | -     | -     | -     |



## AUTOMATIC CNC PUNCHING, DRILLING AND MARKING SYSTEMS



Drilling, punching and marking units

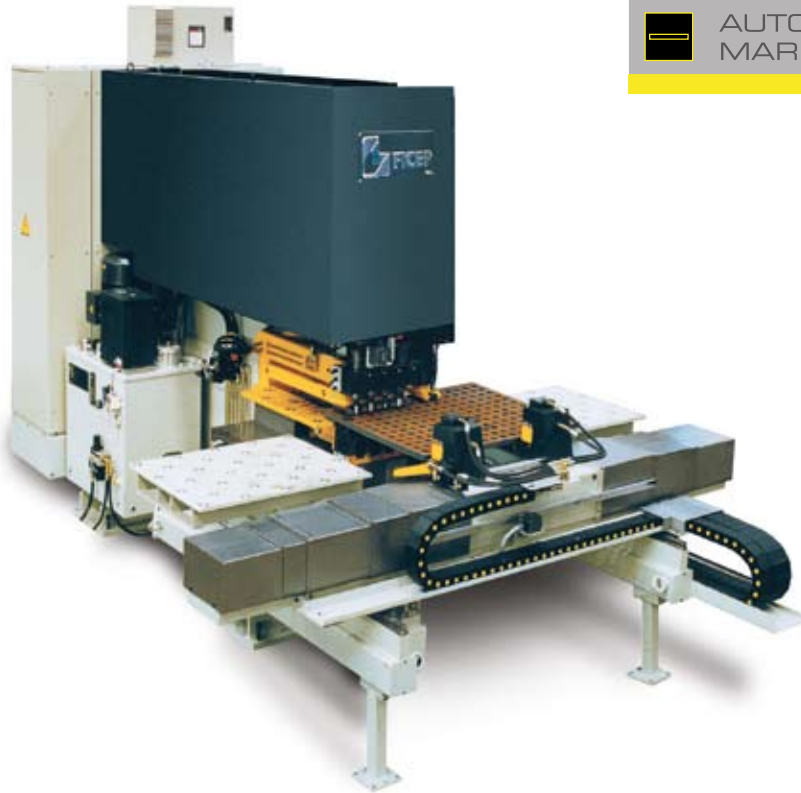


P51

| MODEL                |     | P51                 |
|----------------------|-----|---------------------|
| Working range        | mm  | 500 x repositioning |
| Punches              | No. | 3                   |
| Max. Punching Dia.   | mm  | 46                  |
| Max. Thickness       | mm  | 25                  |
| Punch. nominal power | kN  | 800                 |
| Drilling Spindle     | No. | 1                   |
| CNC Axes             | No. | 2                   |



## AUTOMATIC CNC PUNCHING, DRILLING AND MARKING SYSTEMS



Punching and drilling units



P81

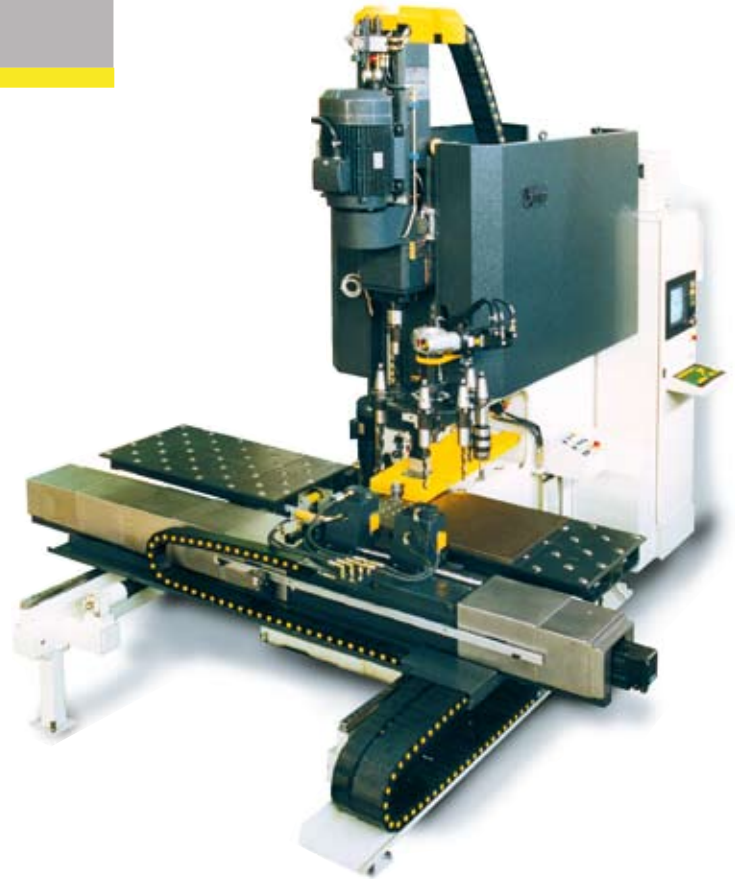
| MODEL                   |     | P81                 |
|-------------------------|-----|---------------------|
| Working Range           | mm  | 800 x repositioning |
| Punches                 | No. | 4                   |
| Max. Punching Dia.      | mm  | 46                  |
| Max. Punching Thickness | mm  | 25                  |
| Punching nominal power  | kN  | 1000                |
| Drilling Spindle        | No. | 1                   |
| CNC Axes                | No. | 2                   |



## AUTOMATIC CNC DRILLING AND MARKING SYSTEMS



Marking unit

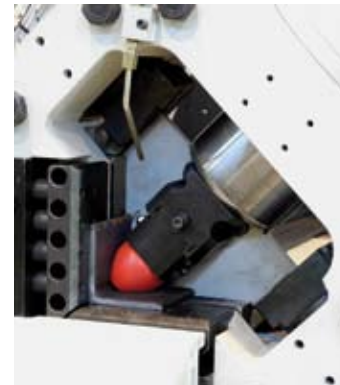
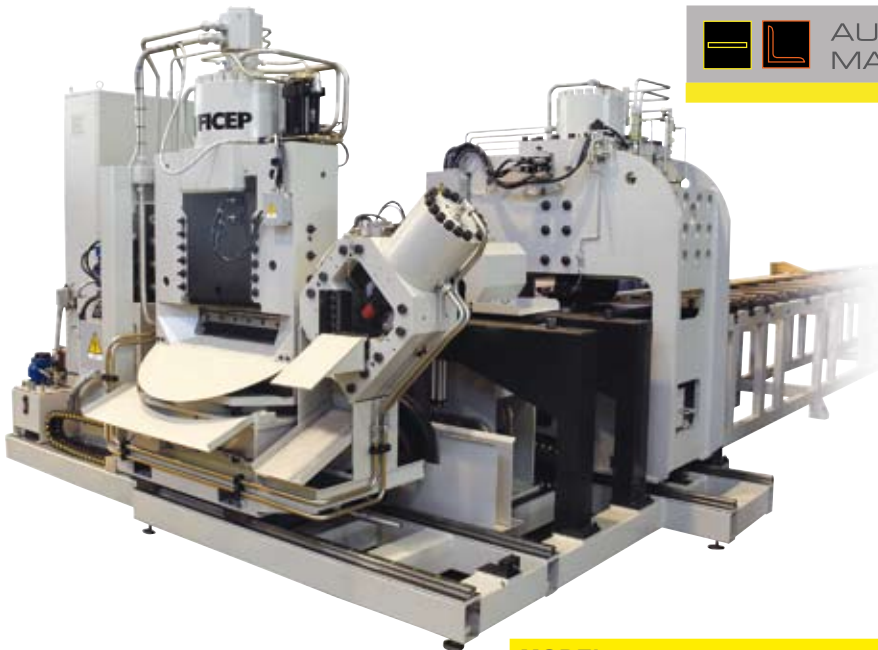


| MODEL                   |     | P112D                |
|-------------------------|-----|----------------------|
| Working Range           | mm  | 1000 x repositioning |
| Drilling Spindles       | No. | 1                    |
| Tools (ATC)             | No. | 6                    |
| Max. Drilling Dia.      | mm  | 40 (50)              |
| Max. Drilling Thickness | mm  | 60                   |
| Drilling Spindle power  | kW  | 19                   |
| CNC Axes                | No. | 3                    |

P112D



## AUTOMATIC CNC PUNCHING, DRILLING, MARKING AND SHEARING SYSTEMS

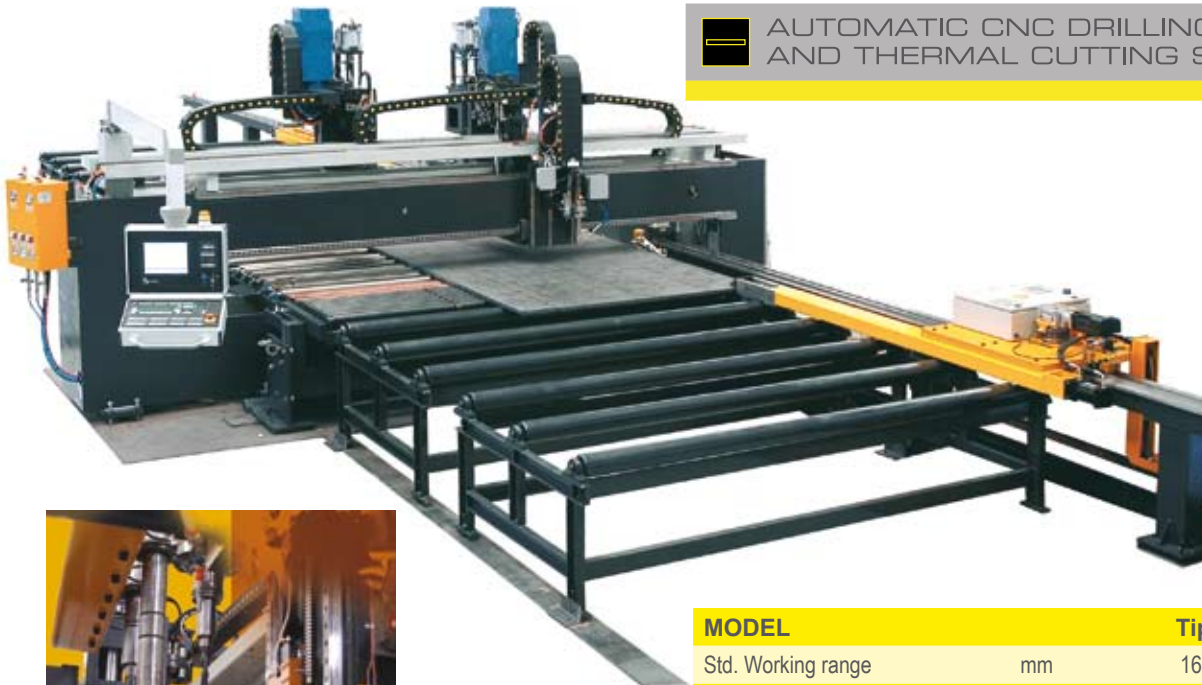


### TIPO D6

| MODEL                  |     | Tipo D2    | Tipo D4    | Tipo D6    | Tipo D8    |
|------------------------|-----|------------|------------|------------|------------|
| Max. Angles            | mm  | 150x150x16 | 150x150x16 | 150x150x16 | 200x200x16 |
| Max. Flats             | mm  | 510x25     | 510x25     | 510x25     | 510x25     |
| Punching Capacity      | mm  | 35x25      | 35x25      | 35x25      | 35x25      |
| Max. Punching Dia.     | mm  | 40         | 46         | 40         | 46         |
| Punching tools         | No. | 2          | 4          | 6          | 8          |
| Punching nominal power | kN  | 1200       | 1100       | 1200       | 1100       |
| Shearing nominal power | kN  | 2200       | 2200       | 2200       | 2200       |
| CNC Axes               | No. | 2          | 2          | 2          | 3          |



## AUTOMATIC CNC DRILLING, MARKING AND THERMAL CUTTING SYSTEMS



Drilling unit

TIPO A31

| MODEL                       |     | Tipo A 16 | Tipo A 31 |
|-----------------------------|-----|-----------|-----------|
| Std. Working range          | mm  | 1600x3000 | 3100x6000 |
| Max. Drilling Diameter      | mm  | 40 (50)   | 40 (50)   |
| Max. Material Thickness     | mm  | 130       | 130       |
| Drilling Spindles           | No. | 1         | 1(2)      |
| Drilling nominal power      | kW  | 19        | 19        |
| Auto. Tool Change Positions | No. | 6         | 6 (12)    |
| Plasma Torch                | No. | 1         | 1 (2)     |
| Oxycutting Torch            | No. | 1         | 1 (2)     |
| CNC Axes                    | No. | 3         | 3 (4)     |



## AUTOMATIC CNC PUNCHING, MARKING AND THERMAL CUTTING SYSTEMS



Drilling unit



TIPO B251

| MODEL                          |     | Typo B 161 | Typo B 251 |
|--------------------------------|-----|------------|------------|
| Std. Working range             | mm  | 1600x3000  | 2540x6000  |
| Max Material Thickn. Punching  | mm  | 25         | 25         |
| Max. Material Thickn. Drilling | mm  | 100        | 100        |
| Max. Punching Diameter         | mm  | 100        | 100        |
| Punching nominal power         | kN  | 1000       | 1000       |
| Punching Tools                 | No. | 1 (6)      | 1 (4-8-14) |
| Drilling Spindle               | No. | 1          | 1          |
| Drilling Tools                 | No. | 1 (5)      | 1 (6)      |
| Marking Unit                   | No. | 1          | 1          |
| Plasma Torch                   | No. | 1          | 1          |
| Oxy-fuel Torch                 | No. | 1          | 1          |
| CNC Axes                       | No. | 3          | 3          |



# AUTOMATIC CNC PUNCHING, MARKING AND THERMAL CUTTING SYSTEMS



Plasma cutting unit



Punching unit



| MODEL                            |     | Tipo C 16 | Tipo C 25 |
|----------------------------------|-----|-----------|-----------|
| Std. Working range               | mm  | 1600x3100 | 2540x6000 |
| Max Material Thickness Punching  | mm  | 16        | 20        |
| Max. Material Thickness Drilling | mm  | 16        | 25        |
| Max. Punching Diameter           | mm  | 100       | 100       |
| Punching nominal power           | kN  | 500       | 1000      |
| Punching Tools                   | No. | 1 (14)    | 1 (14)    |
| Drilling Spindle                 | No. | 1         | 1         |
| Drilling Tools (ATC)             | No. | 6         | 6         |
| Marking Unit                     | No. | -         | 1         |
| Plasma Torch                     | No. | 1         | 1         |

TIPO C16



## AUTOMATIC CNC PUNCHING, DRILLING, MARKING AND SHEARING SYSTEMS



Punching unit



| MODEL           |     | A 92    | A 162      | A 164      | A 166      | A 204      | A 206      |
|-----------------|-----|---------|------------|------------|------------|------------|------------|
| Max. Angle Size | mm  | 90x90x9 | 160x160x19 | 160x160x19 | 160x160x19 | 200x200x25 | 200x200x25 |
| Punching force  | kN  | 400     | 720        | 720        | 720        | 1000       | 1000       |
| Dia. Per flange | No. | 1       | 1          | 2          | 3          | 2          | 3          |
| Max. Diameter   | mm  | 30      | 30         | 30         | 32         | 32         | 32         |
| Shearing force  | kN  | 1800    | 2000       | 2000       | 2000       | 4500       | 4500       |
| CNC Axes        | No. | 5       | 5          | 5          | 7          | 7          | 7          |

A 166



## AUTOMATIC CNC PUNCHING, DRILLING, NOTCHING, MARKING AND SHEARING SYSTEMS FOR STEEL TOWERS



| MODEL           |     | A 124T     | A 162T     | A 164T     | A 166T     | A 204T     | A 206T     | A 35/6T     |
|-----------------|-----|------------|------------|------------|------------|------------|------------|-------------|
| Max. Angle Size | mm  | 120x120x13 | 160x160x15 | 160x160x19 | 160x160x19 | 200x200x25 | 200x200x20 | 200x200x25  |
| Punching force  | kN  | 650        | 650        | 720        | 720        | 1000       | 1000       | drill tools |
| Dia. Per flange | No. | 2          | 1          | 2          | 3          | 2          | 3          | 1 (6)       |
| Max. Diameter   | mm  | 32         | 30         | 30         | 30         | 32         | 32         | 40 (50)     |
| Shearing force  | kN  | 1800       | 1800       | 2000       | 2000       | 4500       | 4500       | 4500        |
| CNC Axes        | No. | 5          | 5          | 5          | 7          | 7          | 7          | 5           |

A 164T



Drilling unit

1101 DX  
VICTORY 11

| MODEL                  |     | 1101 DX - Victory 11 |
|------------------------|-----|----------------------|
| Max. Section Size      | mm  | 1100x1100            |
| Drill Heads            | No. | 1                    |
| Drill Spindles         | No. | 1                    |
| Max. Drillind Diameter | mm  | 40                   |
| Spindle Power          | kW  | 7,5                  |
| CNC Axes               | No. | 2                    |



## AUTOMATIC CNC DRILLING AND MARKING SYSTEMS



Automatic tool change system

### 1201 DF ORIENT 12

| MODEL                  |     | 601 DF<br>Orient 6 | 1201 DF<br>Orient 12 | 2001 DF<br>Orient 20 |
|------------------------|-----|--------------------|----------------------|----------------------|
| Web Height Min./Max.   | mm  | 60/610             | 80/1220              | 200/2000             |
| Flange Width Min./Max. | mm  | 30/310             | 42/510               | 60/510               |
| Drill Heads            | No. | 1                  | 1 (2)                | 1 (2)                |
| Drilling Tools         | No. | 6 (12)             | 6 (12)               | 6 (12)               |
| Max. Drilling Diameter | mm  | 40                 | 40                   | 40                   |
| Spindle Power          | kW  | 7,5                | 15                   | 15                   |
| CNC Axes               | No. | 3                  | 3 (5)                | 3 (5)                |



803 DX  
VICTORY 8



Marking unit

| MODEL                  |     | 803 DX - Victory 8 |
|------------------------|-----|--------------------|
| Web Height Min./Max.   | mm  | 60/800             |
| Flange Width Min./Max. | mm  | 30/410             |
| Drill Heads            | No. | 3                  |
| Max. Drilling Diameter | mm  | 40                 |
| Spindle Power          | kW  | 5,5                |
| CNC Axes               | No. | 7                  |



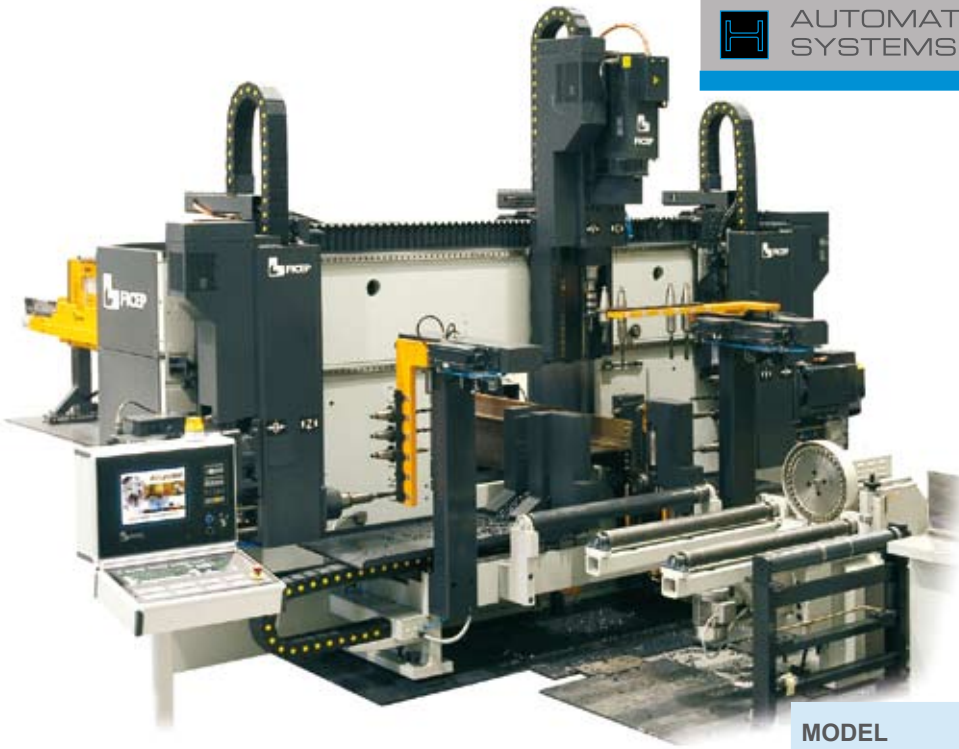
Automatic tool change system

1203 DF  
VANGUARD 12

| MODEL                  |     | 603 DF<br>Vanguard 6 | 1203 DF<br>Vanguard 12 |
|------------------------|-----|----------------------|------------------------|
| Web Height Min./Max.   | mm  | 60/610               | 80/1220                |
| Flange Width Min./Max. | mm  | 30/310               | 42/510                 |
| Drill Heads            | No. | 3                    | 3                      |
| Tools per spindle      | No. | 1 (6)                | 1 (6)                  |
| Max. Drilling Diameter | mm  | 40                   | 40                     |
| Spindle Power          | kW  | 7,5                  | 15                     |
| CNC Axes               | No. | 7                    | 7                      |

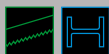


## AUTOMATIC CNC DRILLING SYSTEMS



### 1203 DJ ENTERPRISE 12

| MODEL                  |     | 1203 DJ<br>Enterprise 12 | 2003 DJ<br>Enterprise 20 |
|------------------------|-----|--------------------------|--------------------------|
| Web Height Min./Max.   | mm  | 80/1220                  | 200/2000                 |
| Flange Width Min./Max. | mm  | 42/600                   | 60/600                   |
| Drill Heads            | No. | 3                        | 3                        |
| Tools per spindle      | No. | 1 (6)                    | 1 (6)                    |
| Max. Drilling Diameter | mm  | 40 (50)                  | 40 (50)                  |
| Spindle Power          | kW  | 19                       | 19                       |
| CNC Axes               | No. | 7                        | 7                        |

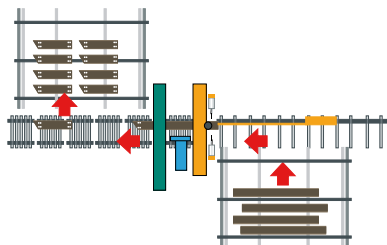


# AUTOMATIC CNC DRILLING SYSTEMS COMBINED WITH BAND AND DISC SAWING UNITS

 Automatic CNC drilling system

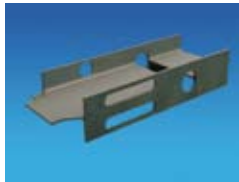
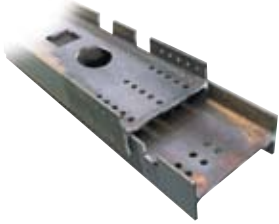
 Marking unit

 Band saw



**1003 DFB  
VANGUARD 10**

| MODEL                     | 601 DFB<br>Orient 6 | 603 DXB<br>Victory 6 | 603 DFB<br>Vanguard 6 | 803 DXB<br>Victory 8 | 1003 DFB<br>Vanguard 10 | 1001 DFB<br>Orient 10 | 1101 DFB<br>Orient 11 | 1103 DFB<br>Vanguard 11 | 1201 DFB<br>Orient 12 | 1203 DFB<br>Vanguard 12 | 1203 DJB<br>Enterprise 12 | 2003 DJB<br>Enterprise 20 | 1203 DFD<br>Vanguard 12 | 1201 DFD<br>Orient 12 | 1203 DJD<br>Enterprise 12 |
|---------------------------|---------------------|----------------------|-----------------------|----------------------|-------------------------|-----------------------|-----------------------|-------------------------|-----------------------|-------------------------|---------------------------|---------------------------|-------------------------|-----------------------|---------------------------|
| Web Height<br>Min./Max.   | mm 60/610           | 60/610               | 60/610                | 60/800               | 80/1015                 | 80/1015               | 80/1100               | 80/1100                 | 80/1220               | 80/1220                 | 80/1220                   | 200/2000                  | 80/1220                 | 80/1220               | 80/1220                   |
| Flange Width<br>Min./Max. | mm 30/310           | 30/310               | 30/310                | 30/410               | 42/450                  | 42/450                | 42/510                | 42/510                  | 42/510                | 42/510                  | 42/600                    | 42/600                    | 42/450                  | 42/450                | 42/450                    |
| Drill Heads               | No. 1               | 3                    | 3                     | 3                    | 3                       | 1                     | 1 (2)                 | 3                       | 1 (2)                 | 3                       | 3                         | 3                         | 3                       | 1 (2)                 | 3                         |
| Spindle Power             | kW 7,5              | 5,5                  | 7,5                   | 5,5                  | 15                      | 15                    | 15                    | 15                      | 15                    | 15                      | 19                        | 19                        | 15                      | 15                    | 19                        |
| Band Saw<br>Motor         | kW 4                | 4                    | 4                     | 5,5                  | 5,5                     | 5,5                   | 11                    | 11                      | 11                    | 11                      | 11                        | 11                        | disc                    | disc                  | disc                      |
| CNC Axes                  | No. 3+2             | 7+2                  | 7+2                   | 7+2                  | 7+2                     | 3+2                   | 3+2                   | 7+2                     | 3+2                   | 7+2                     | 7+2                       | 7+2                       | 7+2                     | 3+2                   | 7+2                       |



**604 DFRC  
VANGUARD 6**



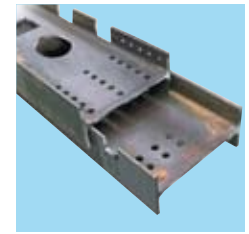
**AUTOMATIC CNC DRILLING SYSTEMS  
COMBINED WITH COPING UNITS**



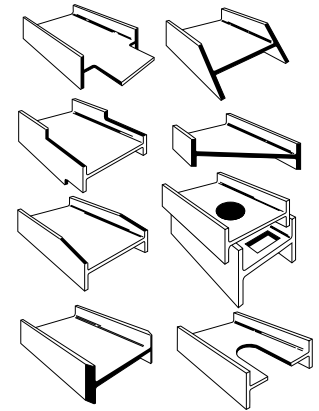
| MODEL                     |     | 602 DFRC<br>Orient 6 | 604 DFRC<br>Vanguard 6 | 1202 DFRC<br>Orient 12 | 1204 DFRC<br>Vanguard 12 | 1204 DJRC<br>Enterprise 12 | 2002 DFTT<br>Orient 20 | 2004 DJTT<br>Enterprise 20 |
|---------------------------|-----|----------------------|------------------------|------------------------|--------------------------|----------------------------|------------------------|----------------------------|
| Web Height<br>Min./Max.   | mm  | 60/610               | 60/610                 | 42/510                 | 42/510                   | 42/600                     | 60/510                 | 60/600                     |
| Flange Width<br>Min./Max. | mm  | 30/310               | 30/310                 | 80/1220                | 80/1220                  | 80/1220                    | 200/2000               | 200/2000                   |
| Drill Heads               | No. | 1                    | 3                      | 1                      | 3                        | 3                          | 1                      | 3                          |
| Coping Tools              | No. | 1                    | 1                      | 1                      | 1                        | 1                          | 1                      | 1                          |
| CNC Axes                  | No. | 3+5                  | 7+5                    | 3+5                    | 7+5                      | 7+5                        | 3+5                    | 7+5                        |



# AUTOMATIC CNC COPING SYSTEMS



Thermal coping system



| MODEL                  |     | 1201 RC | 2061TT   |
|------------------------|-----|---------|----------|
| Beam Height Min./Max.  | mm  | 80/1220 | 200/2000 |
| Flange Width Min./Max. | mm  | 42/600  | 60/600   |
| Coping Tools           | No. | 1 (2)   | 1        |
| CNC Axes               | No. | 7       | 6        |

1201 RC



## STAND ALONE BAND & DISC SAWING UNITS



1260 BH

| MODEL               |    | 603 BH  | 1045 BH  | 1150 BH  | 1260 BH  | 1260 BHF |
|---------------------|----|---------|----------|----------|----------|----------|
| Sawing Capacity 90° | mm | 610x310 | 1015x450 | 1100x510 | 1250x600 | 1250x600 |
| Sawing Capacity 45° | mm | 400x310 | 620x450  | 700x510  | 800x600  | -        |
| Sawing Capacity 60° | mm | 250x250 | 350x350  | 500x500  | 500x500  | -        |
| Band motor power    | kW | 4       | 5,5      | 11       | 11       | 11       |



## AUTOMATIC CNC BAND & DISC SAWING SYSTEMS



1260 LBH

| MODEL               |         | 603 LBH | 1045 LBH | 1150 LBH | 1260 LBH | 1231 TD        |
|---------------------|---------|---------|----------|----------|----------|----------------|
| Sawing Capacity 90° | mm      | 610x310 | 1015x450 | 1100x510 | 1250x600 | 1250x310 (450) |
| Sawing Capacity 45° | mm      | 400x310 | 620x450  | 700x510  | 800x600  | 800x310 (450)  |
| Sawing Capacity 60° | mm      | 250x250 | 350x350  | 500x500  | 500x500  | -              |
| Mitering Angle      | Degrees | +/-60°  | +/-60°   | +/-60°   | +/-60°   | +/-45°         |
| Saw motor power     | kW      | 4       | 5,5      | 11       | 7,5      | 4,5 / 5,5      |



via Matteotti, 21  
21045 GAZZADA SCHIANNO VA - ITALY  
Tel. +39 0332 876.111 - Fax +39 0332 462.459  
www.ficep.it  
E-mail: ficep@ficep.it



Z.I. "Les Platanes" - B.P. 20  
33360 CAMBLANES - FRANCE  
Tel. +33 (0) 556.20.15.55  
Telefax +33 (0) 556.20.15.56  
www.ficep-france.fr  
E-mail: ficep@ficep-france.fr



Bernhard-Hahn-Str. 7-9  
41812 Erkelenz GERMANY  
Tel. 02431-80020  
Fax 02431-800213  
www.ficep-hmb.de  
E-mail: info@ficep-hmb.de



Av. Vital Brasil n° 540 - Centro - Poá  
São Paulo 08557-000 -BRASIL  
Tel./Fax: +55-11-4636.8798  
e-mail: ficepsulamerica@ig.com.br



Poligono Industrial Ali-Gobeo  
Calle Becolarra, N2 - Pabellón 30  
01010 VITORIA (ALAVA) - SPAIN  
Tel. +34 945.14.83.11  
Fax +34 945.14.81.37  
www.ficepiberica.com  
E-mail: ficep@ficepiberica.com



2301 Industry Court  
Forest Hill Industrial Park  
FOREST HILL, MD 21050 USA  
Tel. 1-410-588-5800  
Fax 1-410-588-5900  
www.ficepcorp.com  
E-mail: info@ficepcorp.com



Office, Tele/fax 0044-2886751150  
Mobile 0044-7711610244  
Office, Tele/fax 0044-1460239635  
Mobile 0044-7876591176



Unit 204, 2<sup>nd</sup> Floor - Block C  
DB Plaza Discovery Bay - HONG KONG  
Tel. +852-2544 6888  
Fax +852-2544 5123  
www.ficep.com.hk  
E-mail: info@ficep.com.hk



10 The Courtyards - Victoria Park  
Victoria Road, Leeds LS14 2LB  
UNITED KINGDOM  
Sales Tel: 0113 2653921  
Service Tel: 0113 2653923  
Fax: 0113 2653913  
www.ficep.co.uk  
E-mail: info@ficep.co.uk



144 El-Alam Str. Forest Bldg., Badaro  
P.O.Box 2019/116 Beirut Court House Beirut  
LEBANON  
Tel. +961 1 386664  
Fax +961 1 386011  
Mobile: +961 70126826  
www.ficep-me.com  
E-mail: info@ficep-me.com